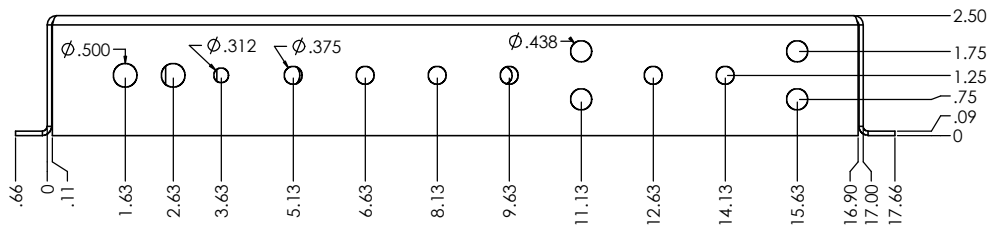
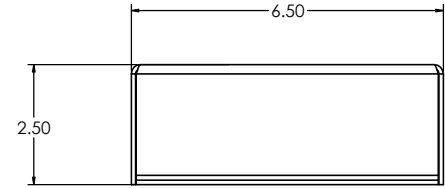
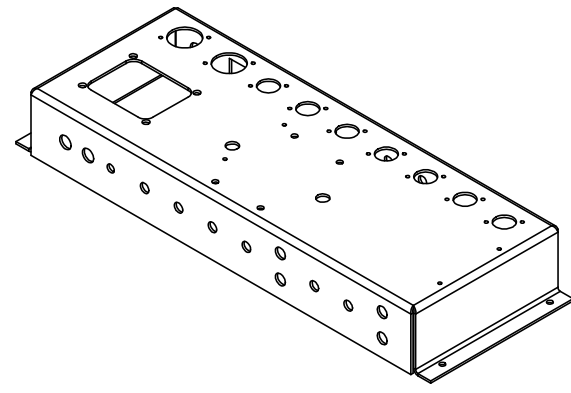
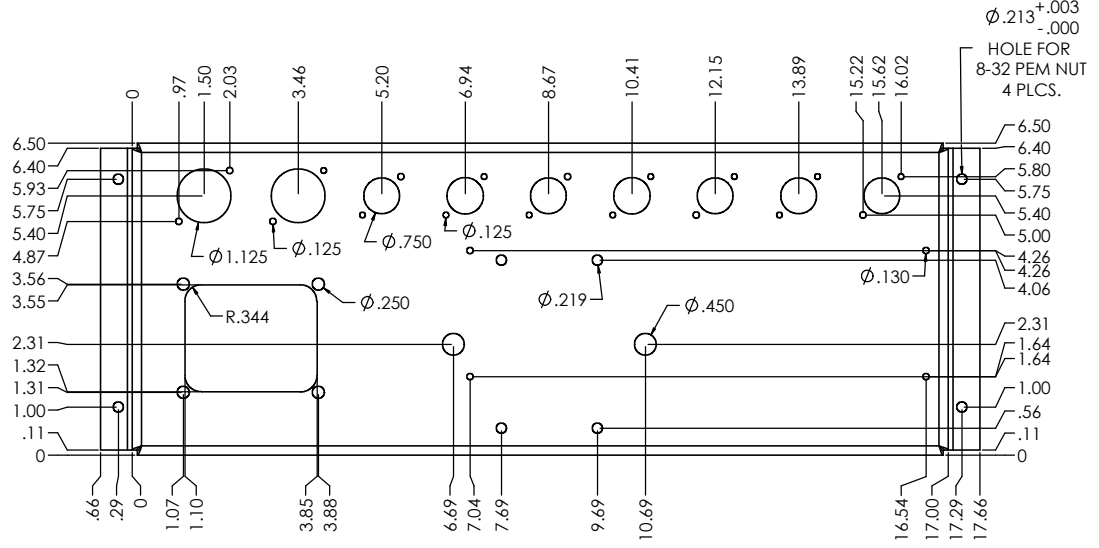
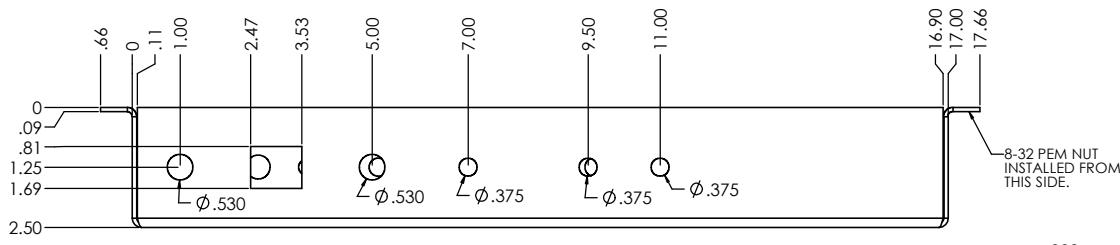


| REVISIONS | | | | |
|-----------|------|--|---------|----------|
| ZONE | REV. | DESCRIPTION | DATE | APPROVED |
| | D | MOVED FIBERBOARD AND TRANSFORMER HOLES | 4-14-06 | |



PROPRIETARY AND CONFIDENTIAL
 THE INFORMATION CONTAINED IN THIS DRAWING IS THE SOLE PROPERTY OF WeberVST. ANY REPRODUCTION IN PART OR AS A WHOLE WITHOUT THE WRITTEN PERMISSION OF WeberVST IS PROHIBITED.

| | | | | |
|-------------|---------|---|-----------|------------|
| | | UNLESS OTHERWISE SPECIFIED: | NAME | DATE |
| | | DIMENSIONS ARE IN INCHES TOLERANCES: FRACTIONAL ± ANGULAR: ±1 BEND ±.030 TWO PLACE DECIMAL ±.015 THREE PLACE DECIMAL ±.010 | DRAWN | GA 4-14-06 |
| | | INTERPRET GEOMETRIC TOLERANCING PER: | CHECKED | |
| | | MATERIAL .09 ALM. | ENG APPR. | |
| NEXT ASSY | USED ON | FINISH | MFG APPR. | |
| APPLICATION | | DO NOT SCALE DRAWING | Q.A. | |
| | | | COMMENTS: | |

| | | |
|-------------------------------|----------|--------------|
| WeberVST | | |
| TITLE: 6M36HCH-REVD | | |
| SIZE E | DWG. NO. | REV D |
| SCALE: 1:1 | WEIGHT: | SHEET 1 OF 1 |