

HOW TO CONNECT A WEBER ATTENUATOR WITH A COMBO AMP (METHOD 1)

IF YOUR SPEAKER USES A DETACHABLE PLUG

LINE OUT

Here, you want to use instrument cable to send a direct signal to a PA mixer or recording interface, etc. If you do not want to send a direct signal anywhere, you can just leave the Line Out jack alone. Use of this jack is optional.

If you use speaker cable, which is not shielded, then it will introduce a bunch of noise - buzzing, radio interference, you name it (it's all bad)

IMPEDANCE

If your attenuator has an impedance selector, the selector on your amp needs to match.

If the attenuator does not have selectable impedance, then you do not have to do anything:

On our attenuators that have two (or three) knobs for adjusting the highs and lows, it would be very difficult and impractical to implement an impedance switch. Because impedance varies with frequency, and we are splitting the frequencies into two components (high and low) a global impedance switch would actually interfere with the tone-shaping function. The unit is designed around an 8 ohm speaker motor, but with all the components of the unit working together, it is safe to use on 4 8 or 16 ohm amps.

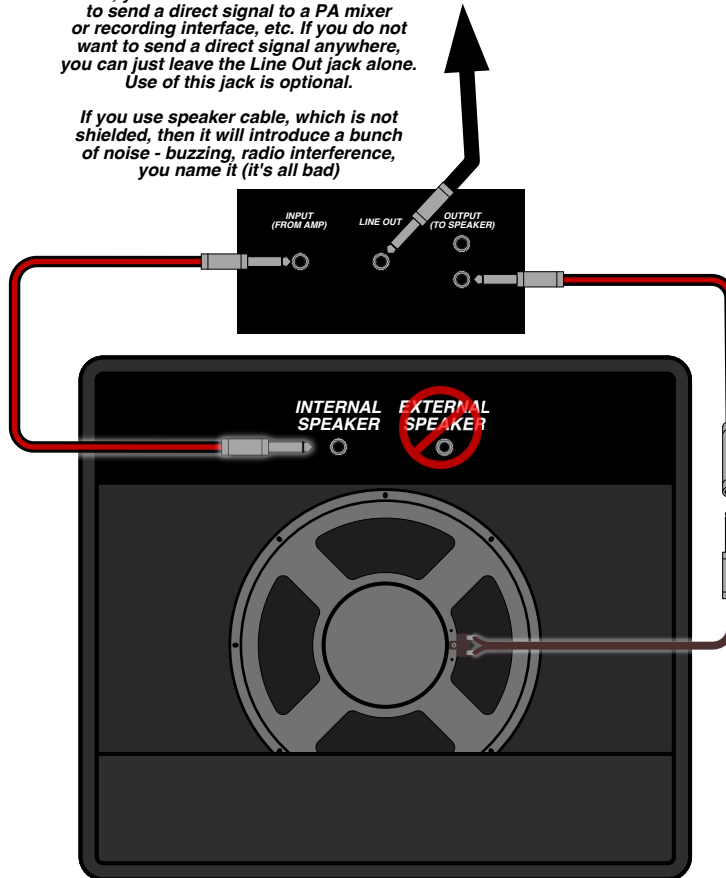
SPEAKER CABLE (GMC2P)

It is imperative to use **speaker cable** and not instrument cable.

Locate the speaker wire on your amp and see how it connects to the amp. A lot of amps connect the speaker with a standard 1/4" plug that you can unplug.

If the speaker is hardwired, the PV30MH is going to be needed. See other diagram.

We sell speaker cables you can use with Weber attenuators.

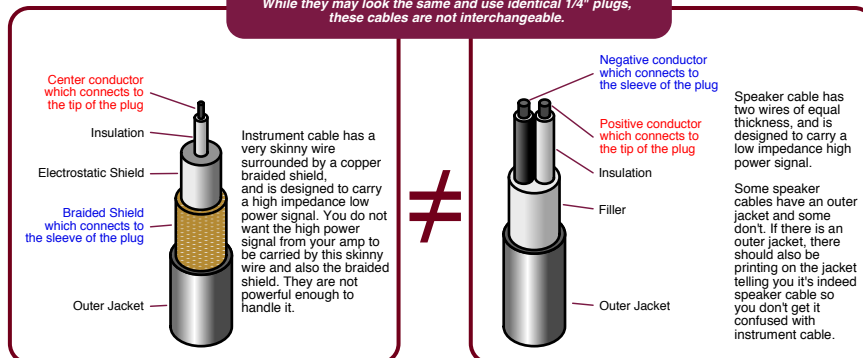


SPEAKER CABLE EXTENDER (GMC2E)

Most people like to set the unit on top of the amp. Sometimes there is enough slack in the speaker wire to reach and sometimes there isn't. We make the GMC2E extender so you can be sure it reaches.

INSTRUMENT CABLE vs SPEAKER CABLE

While they may look the same and use identical 1/4" plugs, these cables are not interchangeable.



WHAT HAPPENS IF I USE THE WRONG CABLE?

Using instrument cable in place of speaker cable will probably work for a while, but will eventually fail under the power of the amp, potentially causing damage to the amp, potentially catching fire and burning your house down. **DO NOT DO THIS.**

Using speaker cable instead of instrument cable will cause tons of noise, because the cable is not shielded. This won't hurt anything, but it's going to be far too annoying to use.